

OPTIONS & ACCESSORIES

(Available for the RevLock or ClearLock series)

Choose from our selection of options and accessories to customise the design, as well as the level of security, safety and control of your security doors.

SECURITY & SAFETY

- Single person detection via volumetric control, video detection system or facial control
- Discriminatory, full-height metal detector with numerous sensitivity settings
- Left object detection
- Vandalism, burglary and bullet resistant glass
- Collapsible wings for emergency egress



AESTHETICS & CUSTOMISATION

- Choice of color, mirror or brushed stainless steel (AISI304L) finish
- Rain proof canopy for outdoor or facade installation
- 2300 mm (90 1/2") of free height under the canopy

CONTROL & MONITORING

- Seamless integration of proximity, swipe, biometric, keypad or other user authentication devices
- Speech synthesizer for user assistance
- Control panel for local or remote IP management



Access controlled... Future secured.



RevLock / ClearLock

SECURITY DOORS

AS AUTOMATIC
SYSTEMS
LEER GROUP

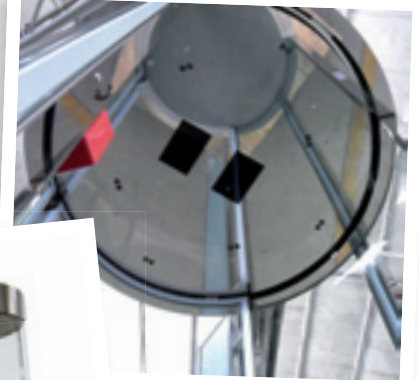
PEDESTRIAN



↻ RevLock

↻ ClearLock

Security doors offer an ideal solution for physical and electronic security of automated entrance control. The doors prevent hot and cold air from directly entering the building, which equates to reduced energy consumption. A solution that is both ecological and highly secure!



SECURITY & SAFETY

- Full-height security booth with entry/exit doors that never open at the same time
- Detection system that prevents unauthorised access
- User safety maximised by complementary systems

AESTHETICS

- Modest structure featuring a large, glassed surface allowing for seamless integration into any environment
- Design eliminates the sense of confinement, all while enabling outside surveillance

CUSTOMISATION

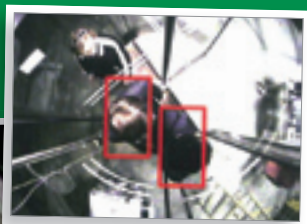
- Simple design provides easy adaptation to the customer's needs
Ex: Height increase to 2300 mm (90 1/2")
- Indoor, facade or exterior installation
- Numerous options and accessories available

FLEXIBILITY

- Doors can be mounted directly on ground surface
- Elegant, slender canopy enabling installation almost everywhere while maintaining a passage height of more than 2 m (82 2/3")
- Electronic and mechanical parts located inside the canopy, easily accessible for maintenance purposes

RELIABILITY AND PERFORMANCE

- Simple, efficient Control Panel to set up and monitor doors
- Remote management using IP connectivity



Single person detection system to prevent piggybacking and tailgating

- Digital camera technology that recognises shapes, sizes and volume in 3D (RevLock series)
- High-precision volumetric sensors (ClearLock series)
- Exceptional balance between fraud detection and throughput
- System sensitivity adjustable via software



SECURITY DOORS

RevLock Series

The RevLock 60x series is a contemporary, revolving security door for prestigious locations. Its frame design assures great thermal insulation, providing strong energy savings in comparison to sliding doors.



RevLock 600

- Revolving Door with 3 sections (120°)
- Passage width: 800 mm
- External diameter: 1800 mm



RevLock 601

- Revolving Door with 4 sections (90°)
- Passage width: 1045 mm
- External diameter: 2300 mm

ClearLock Series

The ClearLock 63x series is a circular security booth with interlocking doors that offers stringent entrance control, particularly required for sensitive sites.



ClearLock 630

- Security Booth with Single Doors
- Passage width: 580 mm
- External diameter: 1050 mm



ClearLock 631

- Security Booth with Single Doors
- Passage width: 700 mm
- External diameter: 1150 mm



ClearLock 632

- Security Booth with Single Doors
- Passage width: 900 mm
- External diameter: 1485 mm

BENEFITS

- Automated pedestrian access control
- Blocks access to restricted areas
- Entry/exit tracking of employees and visitors
- Reduces the need for security personnel
- Energy savings

APPLICATIONS

- Banks and insurance companies
- Government buildings and institutions
- Office buildings, corporate headquarters and administrative sites
- Sensitive sites: Pharmaceutical industry, data centers, airports...